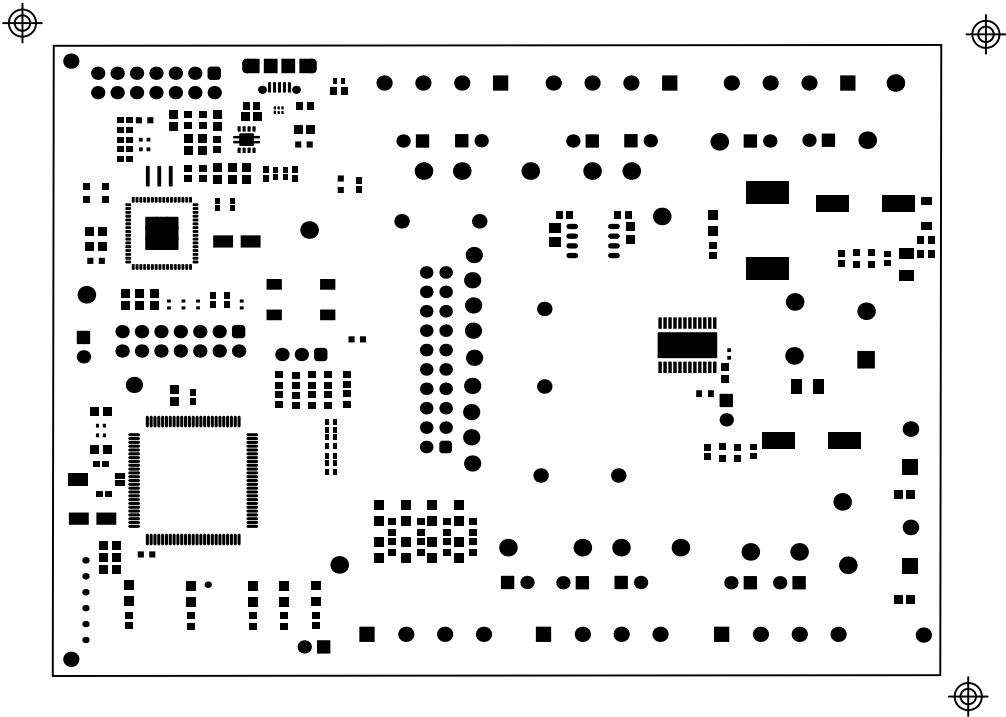
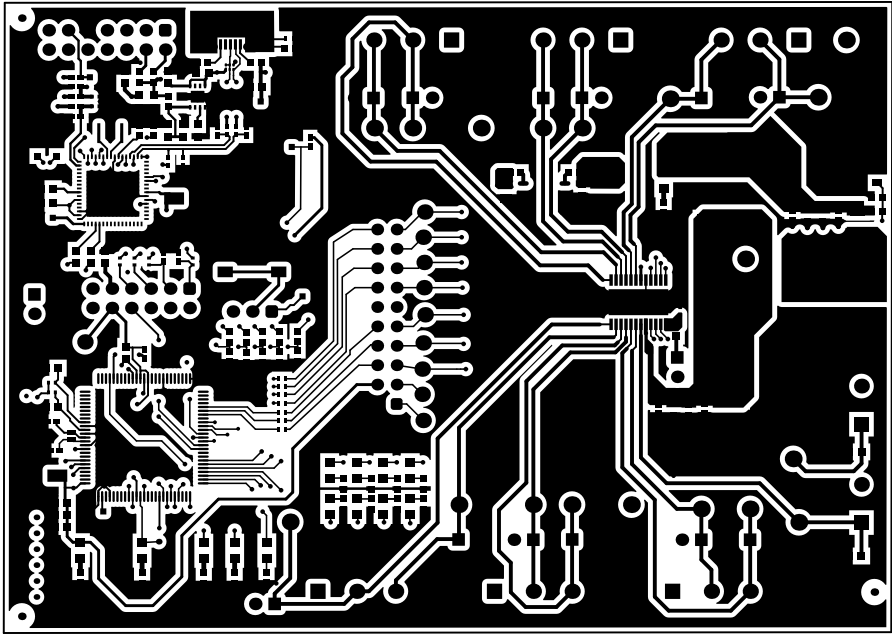


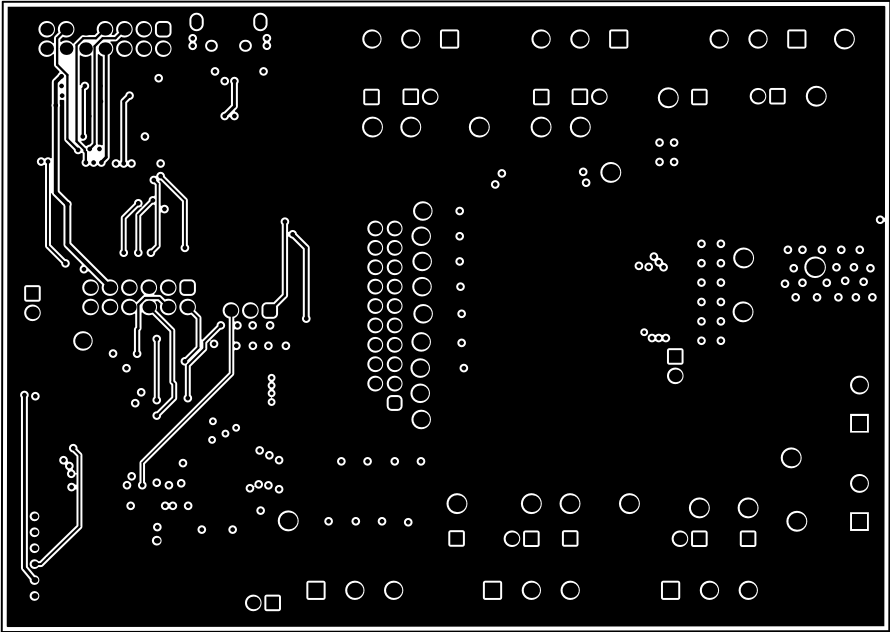
ALL ARTWORK VIEWED FROM TOP SIDE	BOARD #: DRV81602Q1_EVM	REV: E1	SVN REV: Not in version control
LAYER NAME = Top Overlay	TID #: N/A		
PLOT NAME = Multilayer Composite Print	GENERATED : 26-04-2024 02:40:44 PM	TEXAS INSTRUMENTS	



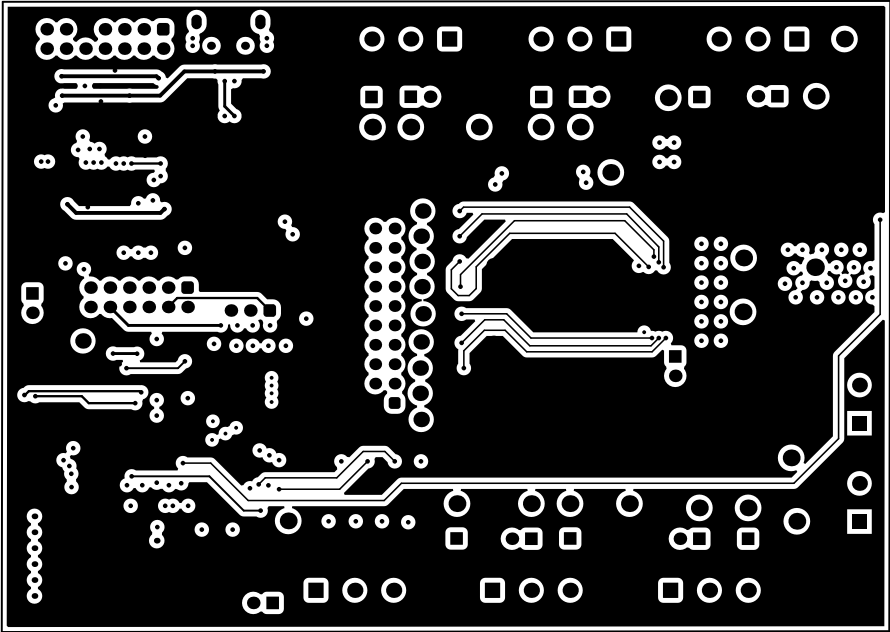
ALL ARTWORK VIEWED FROM TOP SIDE	BOARD #: DRV81602Q1_EVM	REV: E1	SVN REV: Not in version control
LAYER NAME = Top Side Outline	TID #: N/A		
PLOT NAME = New PrintOut 1	GENERATED : 26-04-2024 02:40:45 PM	TEXAS INSTRUMENTS	



ALL ARTWORK VIEWED FROM TOP SIDE	BOARD #: DRV81602Q1_EVM	REV: E1	SVN REV: Not in version control
LAYER NAME = Top Layer Outline	TID #: N/A		
PLOT NAME = New PrintOut 2	GENERATED : 26-04-2024 02:40:48 PM	TEXAS INSTRUMENTS	

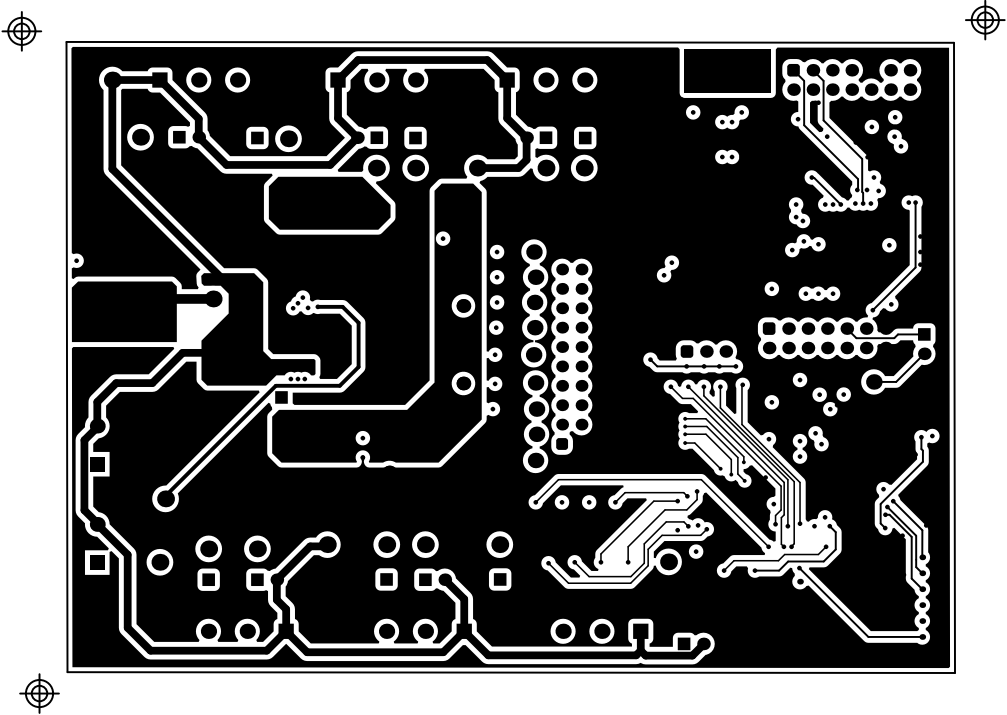


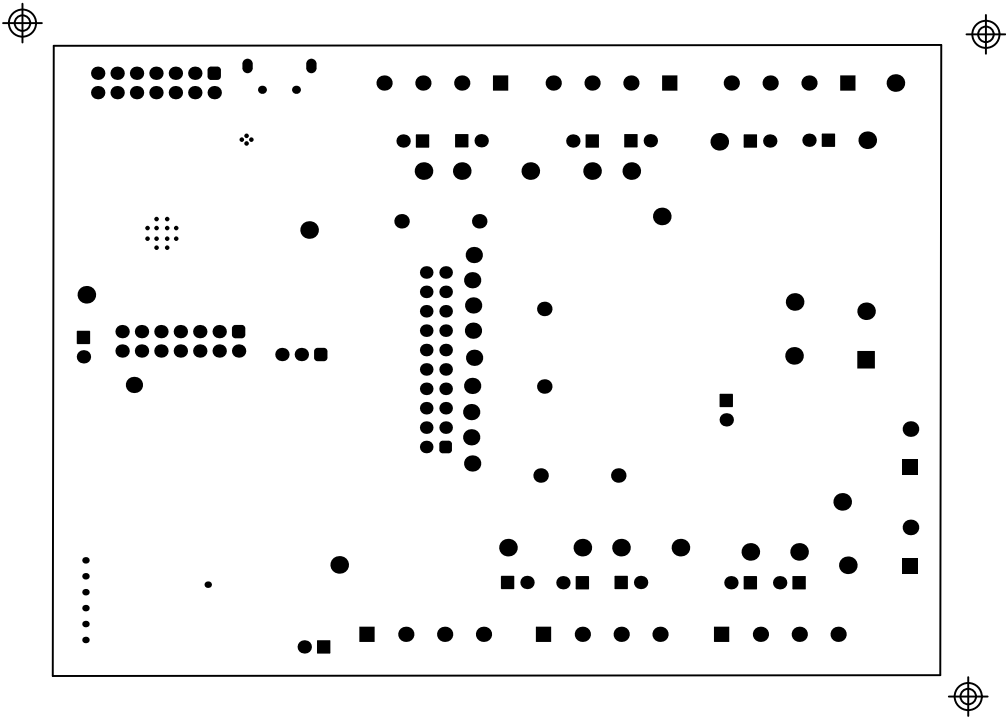
ALL ARTWORK VIEWED FROM TOP SIDE	BOARD #: DRV81602Q1_EVM	REV: E1	SVN REV: Not in version control
LAYER NAME = Signal Layer 1	TID #: N/A		
PLOT NAME = New PrintOut 4	GENERATED : 26-04-2024 02:40:50 PM	TEXAS INSTRUMENTS	



ALL ARTWORK VIEWED FROM TOP SIDE	BOARD #: DRV81602Q1_EVM	REV: E1	SVN REV: Not in version control
LAYER NAME = Signal Layer 2	TID #: N/A		
PLOT NAME = New PrintOut 3	GENERATED : 26-04-2024 02:40:52 PM	TEXAS INSTRUMENTS	

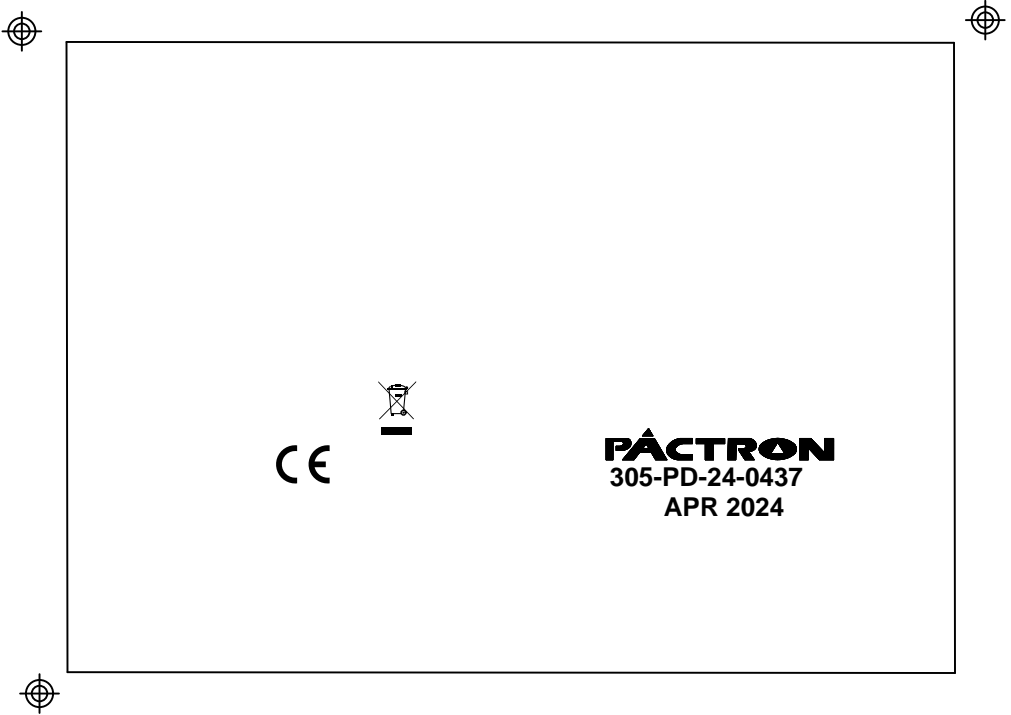
PLOT NAME = New Printout 2		GENERATED : 26-04-2024 05:40:24 PM		TEXAS INSTRUMENTS	
LAYER NAME = BoardOutline		TID # : N/A			
ALL ARTWORK VIEWED FROM TOP SIDE		BOARD # : DR08160501_EVM		REV: E1	
				SUN REV: Not in version control	

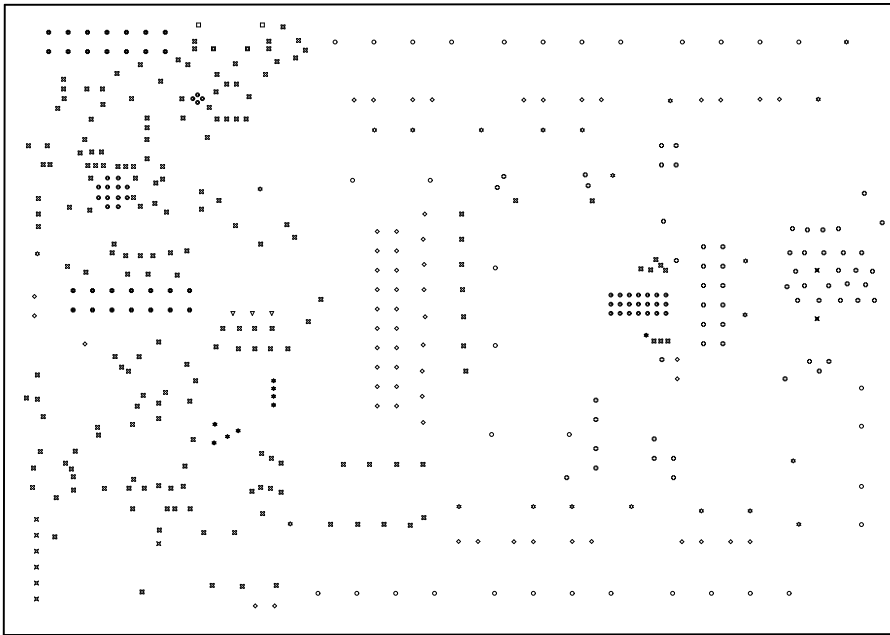




ALL ARTWORK VIEWED FROM TOP SIDE	BOARD #: DRV81602Q1_EVM	REV: E1	SVN REV: Not in version control
LAYER NAME = Bottom Outline	TID #: N/A		
PLOT NAME = New PrintOut 6	GENERATED : 26-04-2024 02:40:56 PM	TEXAS INSTRUMENTS	

PLOT NAME = New Printout 1		GENERATED : 26-04-2024 02:40:28 PM		TEXAS INSTRUMENTS	
LAYER NAME = BoardOutline		TID #: N/A			
ALL ARTWORK VIEWED FROM TOP SIDE		BOARD #: DR08160201_EVM		REV: E1	
				SUN REV: Not in version control	



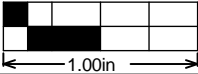
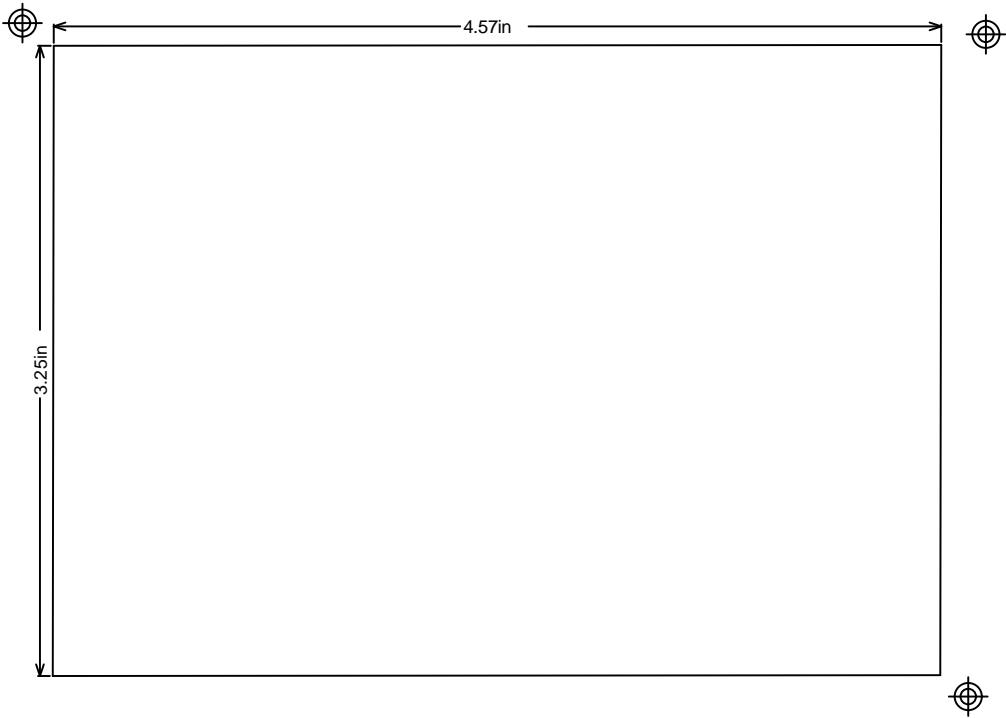


Drill Drawing :

Symbol	Quantity	Finished Hole Size	Plated	Hole Type	Drill Layer Pair	Hole Tolerance	Routed Path Length	Hole Length
⬤	37	7.87mil (0.200mm)	PTH	Round	Top Layer - Bottom Layer	+3mil/-3mil	-	-
⬤	61	8.00mil (0.203mm)	PTH	Round	Top Layer - Bottom Layer	+3mil/-3mil	-	-
✱	9	10.00mil (0.254mm)	PTH	Round	Top Layer - Bottom Layer	+3mil/-3mil	-	-
⊗	184	16.00mil (0.406mm)	PTH	Round	Top Layer - Bottom Layer	+3mil/-3mil	-	-
⊗	7	17.72mil (0.450mm)	PTH	Round	Top Layer - Bottom Layer	+3mil/-3mil	-	-
⬤	58	40.00mil (1.016mm)	PTH	Round	Top Layer - Bottom Layer	+3mil/-3mil	-	-
⬤	28	43.31mil (1.100mm)	PTH	Round	Top Layer - Bottom Layer	+3mil/-3mil	-	-
▽	3	45.28mil (1.150mm)	PTH	Round	Top Layer - Bottom Layer	+3mil/-3mil	-	-
○	34	51.18mil (1.300mm)	PTH	Round	Top Layer - Bottom Layer	+3mil/-3mil	-	-
✱	2	59.06mil (1.500mm)	PTH	Round	Top Layer - Bottom Layer	+3mil/-3mil	-	-
✱	22	63.00mil (1.600mm)	PTH	Round	Top Layer - Bottom Layer	+3mil/-3mil	-	-
⬤	2	25.59mil (0.650mm)	PTH	Slot	Top Layer - Bottom Layer	+3mil/-3mil	3.94mil (0.100mm)	29.53mil (0.750mm)
□	2	51.18mil (1.300mm)	PTH	Slot	Top Layer - Bottom Layer	+3mil/-3mil	-21.65mil (-0.550mm)	29.53mil (0.750mm)
449 Total								

Slot definitions : Routed Path Length = Calculated from tool start centre position to tool end centre position.
Hole Length = Routed Path Length + Tool Size = Slot length as defined in the PCB layout

ALL ARTWORK VIEWED FROM TOP SIDE	BOARD #: DRV81602Q1_EVM	REV: E1	SVN REV: Not in version control
LAYER NAME = DrillBoardOutline	TID #: N/A		
PLOT NAME = New PrintOut 7	GENERATED : 26-04-2024 02:40:59 PM	TEXAS INSTRUMENTS	



ALL ARTWORK VIEWED FROM TOP SIDE	BOARD #: DRV81602Q1_EVM	REV: E1	SVN REV: Not in version control
LAYER NAME = M2 Board Dimensions	TID #: N/A		
PLOT NAME = New PrintOut 8	GENERATED : 26-04-2024 02:41:05 PM		TEXAS INSTRUMENTS